

Handy Tote



The finished tote will be 10" high, 8" wide, and 10" deep.

Unless otherwise indicated, seams are $\frac{1}{2}$ ".

Cut outer fabric 37" x 15.5"

Cut lining 37" x 15.5"

Cut two pieces of fleece:

For fusible fleece, cut 1" smaller 36" x 14.5", center fusible fleece on wrong side of fabric and lining and press according to package directions

For regular fleece, cut 37" x 15.5", stitch fleece with $\frac{1}{2}$ " seams to wrong side of fabric and lining. Trim

OUTER BAG

Step 1. With right sides together, stitch two short ends together. Trim, finish with zig zag stitch

Press seam and fold on exact opposite side—these will be the sides of the tote.

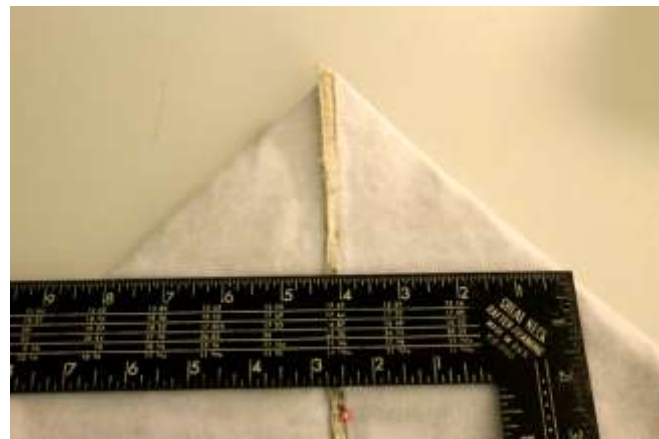


With right sides together, stitch bottom. Trim, finish with zig zag stitch.

Step 2. Box corners, matching side seam with bottom seam on one side and pressed fold with bottom seam on the other side.



Mark boxed seam—should be 8" .



Stitch along marked line, trim and finish with zig zag stitch.



Step 3. Bottom Insert for Bag

Cut Pellon Peltex 71F Single-Side Fusible Ultra Firm Stabilizer 10 ½" x 8"

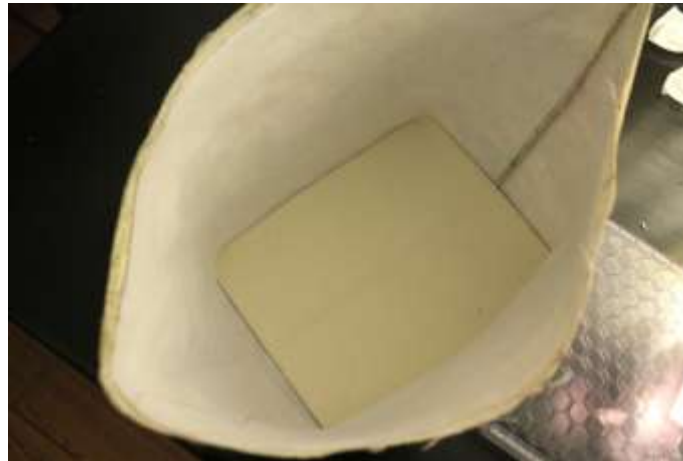
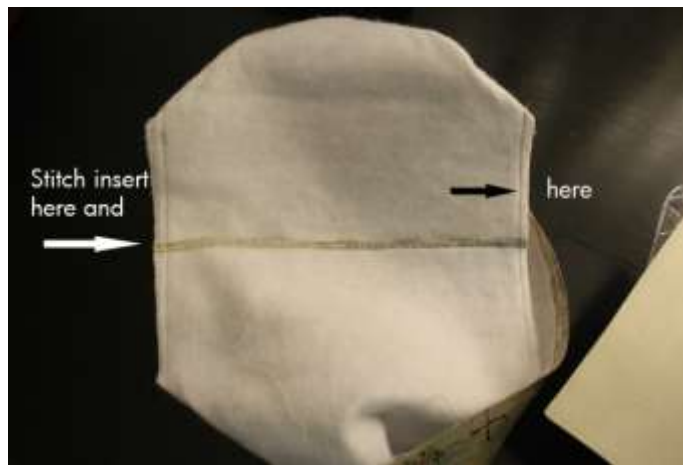


Cut piece of lining fabric 11" x 8 ½", center Peltex on muslin and press per instructions. Turn raw edges of muslin to inside and stitch close to edges.



I didn't cut this piece very accurately, but it will never show in the final product.

Stitch insert, wrong sides together, to seam edges on bottom.



Step 4. Handle

Cut one 40" X 2 ½" fabric

Cut one 40" x 3 ½" burlap

¼" seam

Put wrong side of fabric on burlap. Sew each long side together. Finish edges with zigzag. Turn right side out. You should have a ¼" section of burlap showing on each side of the fabric.

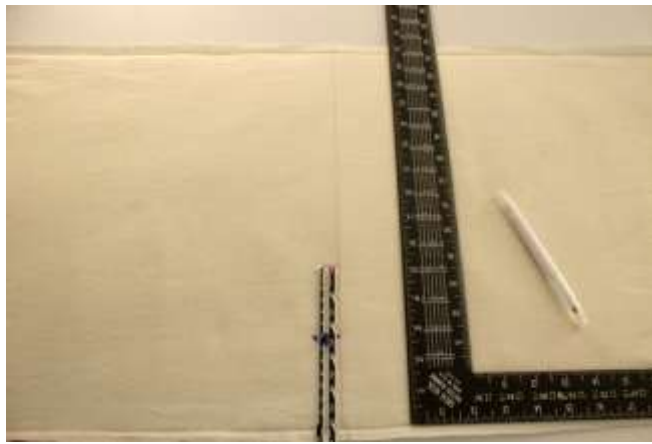
Press

Tuck raw edges on short ends to inside.

Attach on outside of bag—one end on fold side and the other end on seam. Three inches down from top. Center. Stitch large square from bottom of handle to 1" from raw edge on both sides of handle.

BAG LINING

Mark center of lining (16 ½" from edges) mark up 6" from bottom



From center, mark side seams, 4" from center on each side. Then mark 10" from each of these marks. These will be the corners of the bag.

Pockets

Three pockets. All of the pockets are fabric, folded over with right sides together. All seams are $\frac{1}{4}$ " on the pockets. Sew the three open sides, leaving an opening for turning. Cut corners, turn right side out, making sure the corners are nice and pointy, press. Also press the opening under in line with the seam.

Water Bottle Pocket

Cut piece of fabric 12" x 12", put 12" x 6" piece of fleece on top half of the wrong side.

Fold over right sides together, stitch $\frac{1}{4}$ " around edges, leave a 3" gap for turning.

Turn right side out, top stitch, catching the opening.

Put center of pocket on center of lining. Bottom of pocket will be at 6" mark. Edges of pocket will be 3 $\frac{1}{2}$ " from center.

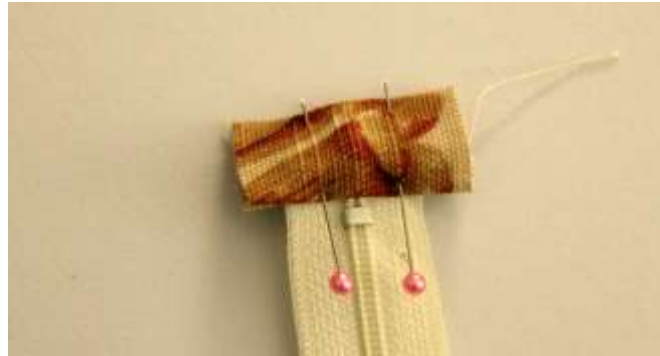
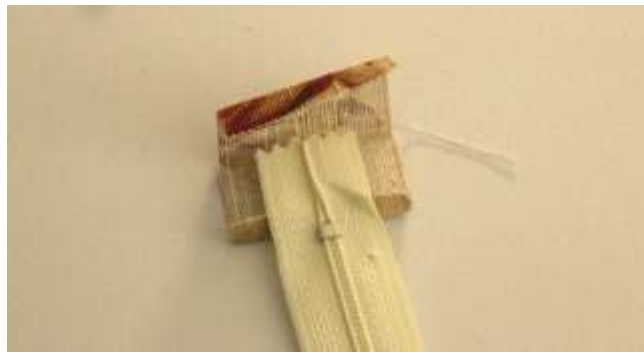


Stitch center line and edges. Do not stitch bottom. This is open for the bottles to go through.

Zippered Pocket

7" zipper

Cut 2 – 2" x 1 $\frac{1}{2}$ " pieces of fabric. Turn under $\frac{1}{4}$ " on each end. Fold over end of zipper. Stitch along end.



Zipper section is now 9" wide.

Cut fabric 9 ½" x 12 ½", fold right sides together, Stitch all sides leaving a gap for turning. Turn right side out. Attach to bottom of zipper.

Cut fabric 9 ½" x 3", fold right sides together, Stitch all seams leaving a gap for turning. Turn right side out. Attach to top of zipper.

Place pocket ½" from each marked side seam and 6" from bottom.



Stitch around all edges.

Phone Pocket

Cut fabric 10 x 11"

Fold wrong sides together and stitch three sides, leaving opening for turning. Turn right side out. Top stitch, catching in opening.

Sew two lines of basting on bottom of pocket. Gather bottom to fit in 9" space

Place ½" from marked side on remaining open space, 6" from bottom. Stitch sides, center seam of pocket and bottom.



Toggle

Cut fabric 5" x 1"

Turn under ¼" on each long side. Fold over so stitch edges are on top of one another. Stitch.

Place toggle, folded on raw edge of top, right above the center of the phone pocket. Stitch in place.

Finish Lining

Finish lining the same way as the outer bag, steps 1 through 3 .

FINISH THE TOTE

Put lining inside of outer bag, right sides together. Matching seam and fold on both the outer bag and lining.

Stitch ½" from top, leaving gap to turn the bag right side out.

Turn right side out. Top stitch edge, make sure to catch in the gap.

Place button on opposite side of toggle on the outer bag and centered above the inner zippered pocket. Sew on button.

Done!

